

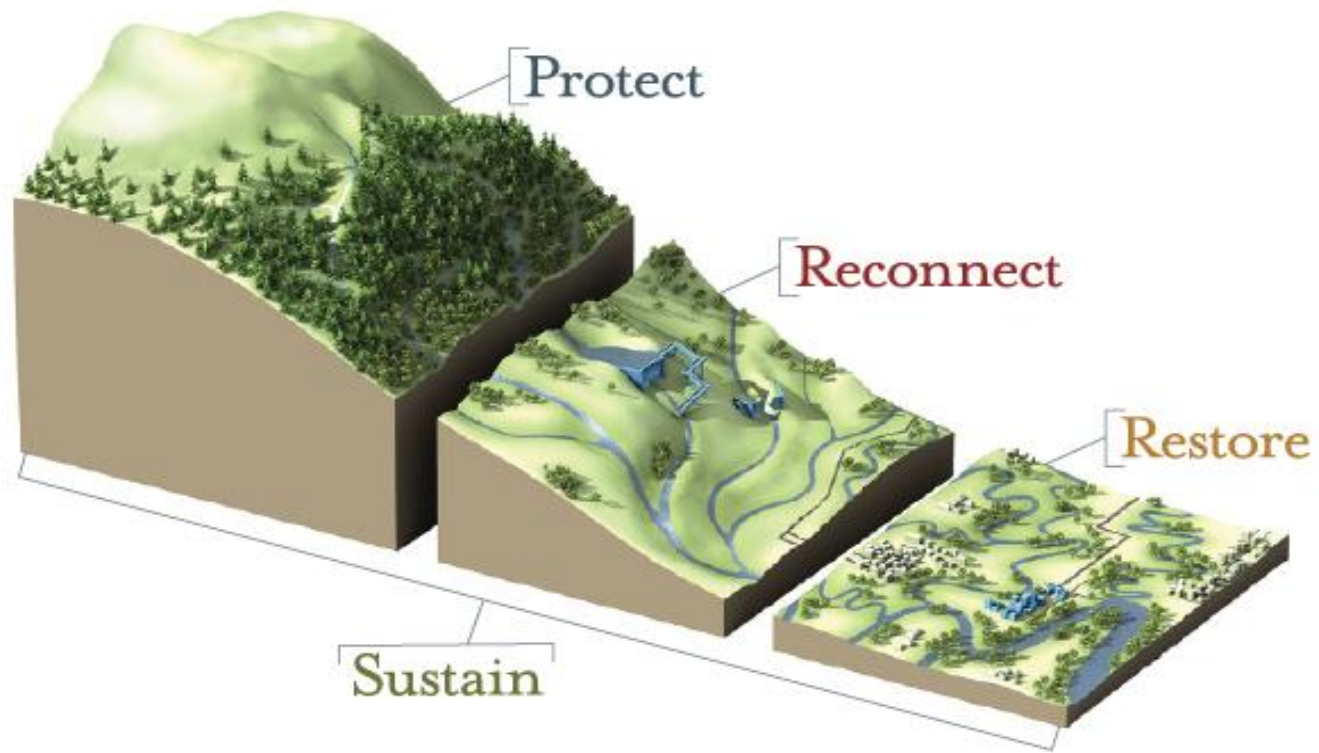


TROUT UNLIMITED

TROUT UNLIMITED'S MISSION IS TO CONSERVE,
PROTECT AND RESTORE NORTH AMERICA'S
COLDWATER FISHERIES AND THEIR WATERSHEDS



Drew Peternell & Aaron Kindle



STRATEGY

- Grassroots engagement
- Support on-the-ground community-led projects and initiatives
- Advocacy at the state and local levels
- Inspire the next generation of sportsmen & women conservationists
- Collaboration and partnerships with private landowners, state, federal, and local agencies, and other key stakeholders
- Reliance on sound science (local knowledge & CSI)
- Leverage resources

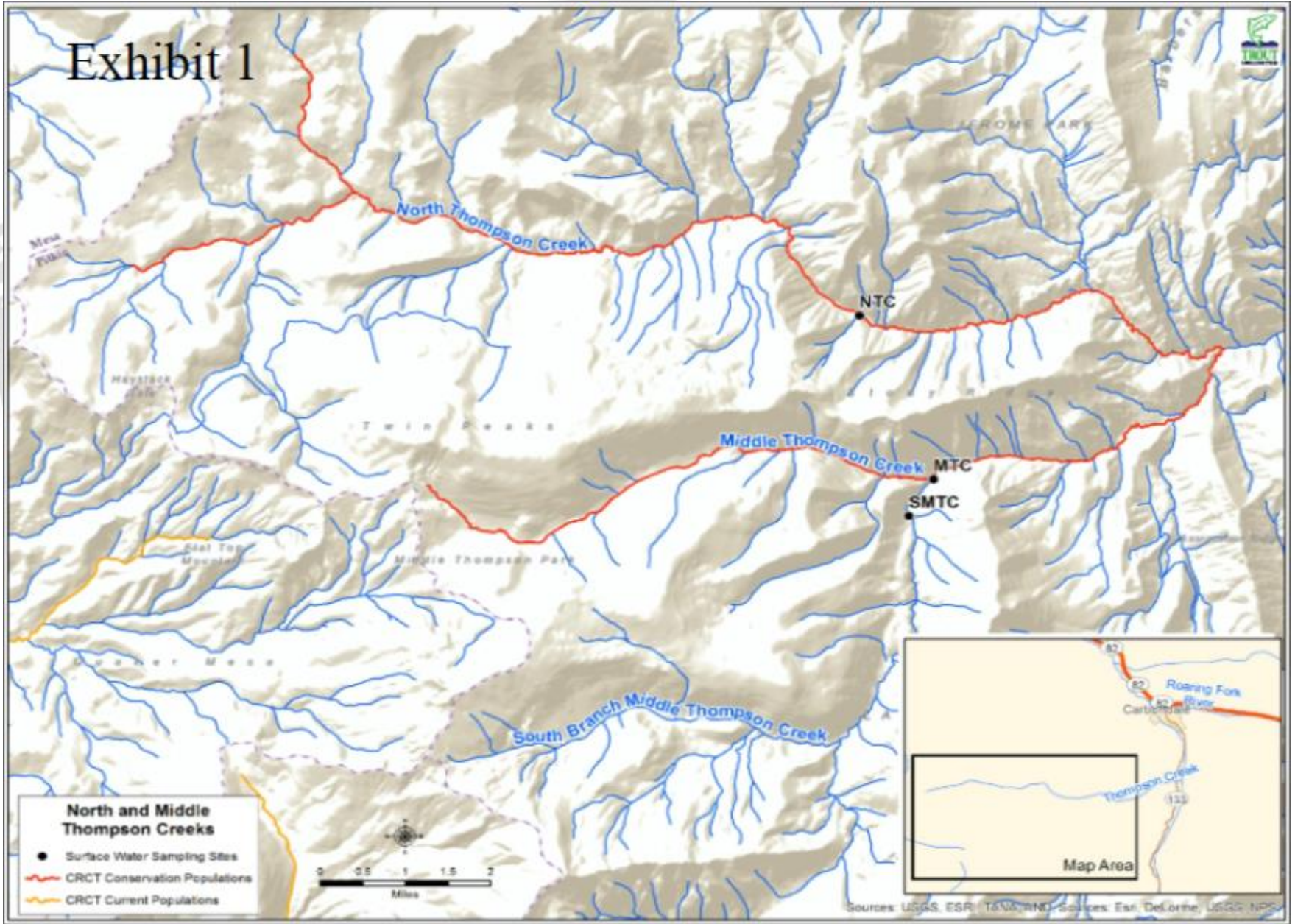


Outstanding Waters

- Thompson Creeks (tribs to Crystal River)
- Designation sought to protect water quality and cutthroat trout fisheries – uses 12 parameters
- Conducted extensive outreach
- Boon to agricultural operators – grandfathers existing uses
- Designation language



Exhibit 1



Statement of Basis and Purpose:

Based on evidence showing that the criteria of 31.8(2)a has been met, the Outstanding Waters (OW) designation has been added to the following stream segments: North Thompson creek and tributaries from its headwaters to the CR 108/Forest Road 304 crossing; Middle Thompson creek and tributaries from its headwaters to the Forest Road 306 crossing; and South Branch of Middle Thompson creek and tributaries from its headwaters to a point immediately upstream of its confluence with Middle Thompson creek. A new segment, Upper Colorado River Segment 10b, has been added for this purpose. In addition to meeting the water quality requirements of 31.8(2)a, these waters support Colorado River cutthroat trout, including key conservation populations in North and Middle Thompson Creek. The Colorado River cutthroat trout is listed as a species of concern in Colorado and is subject to a conservation agreement to prevent potential federal Endangered Species Act listing. The Commission notes that the outreach undertaken by Trout Unlimited as proponent of this designation helps to demonstrate broad support for the conclusion that these waters constitute an outstanding natural resource and that the additional protection provided by this designation is appropriate.

The Commission understands that existing land uses, including grazing, are in place in these watersheds. The evidence demonstrates that these existing land uses are compatible with the OW designation since the current high level of water quality has been attained with these uses in place. It is the Commission's intent that this OW designation should not be used to establish additional permit requirements for existing uses within this area.



TU's Colorado Water Project

- Work to restore stream habitat and stream flows to benefit fish populations.
- Staff in Gunnison, Montrose, Hot Sulphur Springs, Pagosa Springs, Dolores, Grand Junction, Steamboat, Del Norte and Salida.
- Focus on building cooperative projects with farmers and ranchers.



Types of Projects

Riparian Fence



Instream Habitat Restoration



Fish Passage



Stream Flow Improvement



Relief Ditch, Gunnison River



- Decreed to divert 51 cfs from the Gunnison River.
- Historic diversion structure: expensive to maintain; caused disruption to stream channel; blocked fish passage; and, presented a danger to recreational boaters.



Relief Ditch, Gunnison River (After)



- New Structure: Easier to maintain; safer for boaters; healthier for river.
- Price Tag: \$750,000
- Opportunity for flow improvement.



Acme Ditch, Ohio Creek



- Irrigates 600 acres of pasture and hay meadow.
- Low flows in Castle Creek/Ohio Creek.
- Established voluntary flow target of 7 cfs.



Acme Ditch, Ohio Creek (After)



- New pipeline and center pivot.
- More efficiency = easier to meet 7 cfs flow target.
- Opportunity to work with additional water users on Acme ditch.
- Price tag: \$100,000



The image features three speckled trout, likely brown trout, arranged on a rustic wooden surface. One trout is positioned at the top, another at the bottom left, and a third at the bottom right. A central, dark olive-green rectangular box with a thin white border contains the word "Questions?" in a white, serif font. The background is a warm, textured wood grain, and the overall lighting is soft, highlighting the fish's scales and colors.

Questions?